



**Norney Cottage**  
Whittingham







## Norney Cottage, Whittingham, Alnwick, Northumberland, NE66 4UP

Offers Over £395,000

Charming, stone built period cottage, enjoying a superb garden site of approximately 0.44 of an acre, within the heart of the village of Whittingham. Originally constructed as four individual cottages, this property offers spacious accommodation predominately over a single storey, retaining much of the character one would expect of a property of this age and style, alongside large first floor attic space giving numerous possibilities for further accommodation. (Subject to appropriate permissions)

Glazed entrance porch gives access from the front | Generous Lounge which has inglenook style fireplace with wood burning stove and access door to the rear courtyard and garden | To the right, there is access to an open plan unfitted kitchen/breakfast room with garden room to the rear | Double bedroom which has access door to the front garden | Bathroom/wc including separate shower | Second double bedroom which has windows to three elevations for lovely natural light | To the right of the lounge, a hallway leads to a third double bedroom which has ensuite bathroom/wc, including over bath shower | Storage room which has staircase leading to the first floor attic | The attic has dormer window and two further Velux windows for natural light, it is floored with power and lighting and extends over 67'0 in length, giving numerous opportunity for further development | Externally - The property is accessed via a driveway to the side which extends to the attached garage, with timber double access doors. There is a large lawned garden to front, with pathway to front entrance. To the rear, is an extensive lawned garden with paved courtyards from the rear, mature trees and shrubs, timber storage shed and stone outbuilding.

Services: Electric, Water & Drainage | Oil Fired Central Heating | Tenure: Freehold | Council Tax: Band F | EPC: F











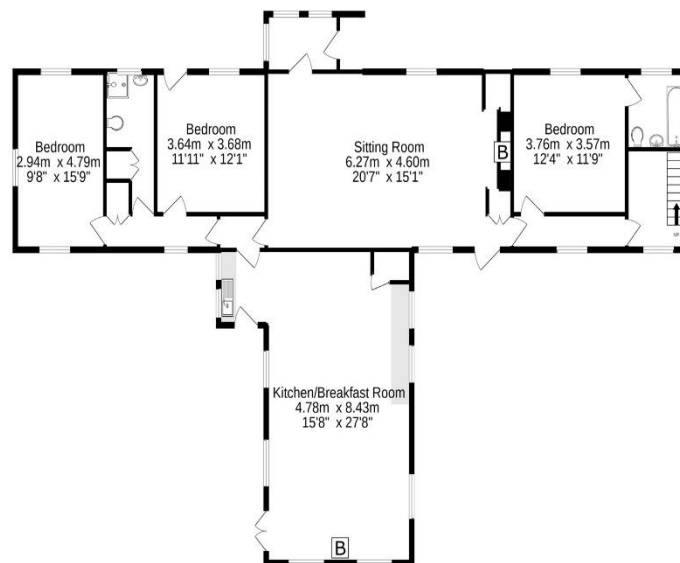








Ground Floor



1st Floor



Whilst every attempt has been made to ensure the accuracy of the floorplan contained here, measurements of doors, windows, rooms and any other items are approximate and no responsibility is taken for any error, omission or mis-statement. This plan is for illustrative purposes only and should be used as such by any prospective purchaser. The services, systems and appliances shown have not been tested and no guarantee as to their operability or efficiency can be given.  
Made with Metropix ©2022



All enquiries to our Alnwick Office | 35 Bondgate Without, Alnwick, Northumberland NE66 1PR

T: 01665 600 170 | [www.sandersonyoung.co.uk](http://www.sandersonyoung.co.uk)

